

SPEC SHEET + MEASUREMENTS



CornerStone® ANSI 107 Class 3 Waterproof Insulated Ripstop Bomber Jacket. CSJ501

Product photo



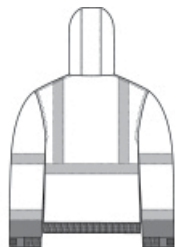
This high-performance, weather-fighting bomber jacket is exceptional for ANSI 107 Class 3 work sites. It provides the protection, organization, durability and visibility you need to see the job through.

- 100% polyester 300-denier ripstop shell with durable water-repellent (DWR) finish
- 4.6-ounce, 100% poly microfleece upper body lining
- 3-ounce quilted polyfill lower body lining
- 2-ounce quilted polyfill hood and sleeve lining
- Black bottom front and lower sleeves for a cleaner appearance
- Fabric waterproof rating: 5000MM
- Fabric breathability rating: 5000G/M²
- Fully seam-sealed
- Adjustable, insulated, zip-removable rain hood with hook and loop closure and toggles
- Durable, reflective 2-inch tape meets ANSI 107 requirements and provides 360-degree visibility on body and sleeves
- Full-length exterior storm flap with snaps
- Left chest bellows pocket with flap and hook and loop closure
- Right chest zippered pocket with rubber zipper pull
- Two lower front pockets with snap closures
- Center front zippered pocket to hold a tablet
- Mic clips at shoulders
- Molded center front zippered closure with rubber zipper pull

Sketches



front



back

SPEC SHEET + MEASUREMENTS



CornerStone® ANSI 107 Class 3 Waterproof Insulated Ripstop Bomber Jacket. CSJ501

- Elastic cuffs with adjustable hook and loop closures with rubber tabs
- Elastic hem
- Decoration access pocket
- This garment must be fully zipped to be in compliance with ANSI 107 standards

CARE INSTRUCTIONS

Machine Wash Cold With Like Colors. Do Not Bleach. Do Not Use Fabric Softener. Tumble Dry Low. Do Not Iron.

PRODUCT MEASUREMENTS

	S	M	L	XL	2XL	3XL	4XL	5XL
Body Length at Back	29 1/2	30 1/2	30 1/2	31	31 1/2	32	32 1/2	33
Chest	22	23 1/2	25	26 1/2	28	30	32	34
Sleeve Length from Center Back	36	36 3/4	37 1/2	38 1/4	39	39 3/4	40 1/2	41 1/4

Body Length at Back: Measured from high point shoulder to finished hem at back.

Chest: Measured across the chest one inch below armhole when laid flat.

Sleeve Length from Center Back: Measure from Center Back neck to shoulder point to sleeve hem.

SPEC SHEET + MEASUREMENTS

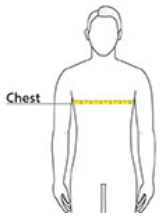


CornerStone® ANSI 107 Class 3 Waterproof Insulated
Ripstop Bomber Jacket. CSJ501

SIZE CHARTS

	S	M	L	XL	2XL	3XL	4XL	5XL
Chest	35-37	38-40	41-43	44-46	47-49	50-53	54-57	58-60

HOW TO MEASURE



CHEST

Measure under the arm and around the fullest part of the chest with arms down, keeping tape horizontal.

COLORS



Safety Yellow